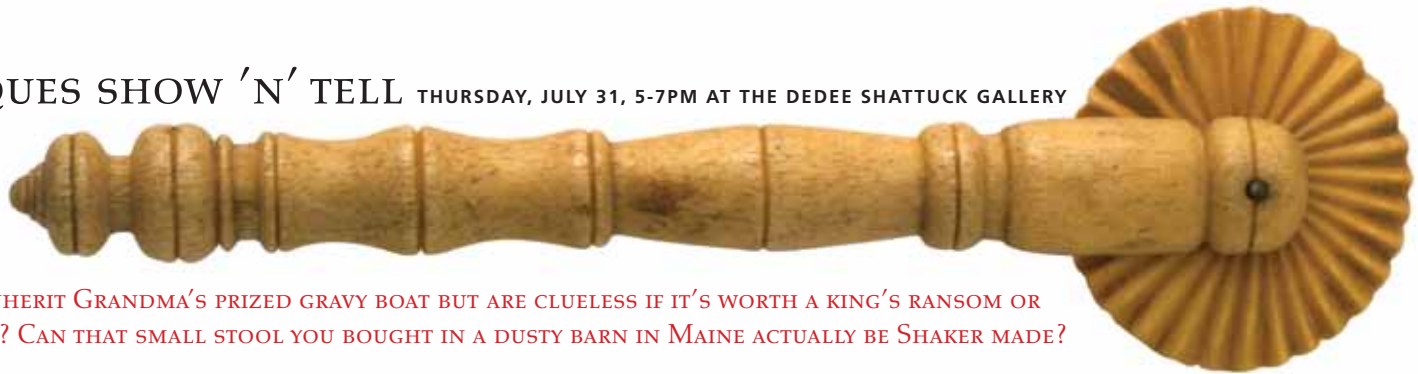


## ANTIQUES SHOW 'N' TELL THURSDAY, JULY 31, 5-7PM AT THE DEDEE SHATTUCK GALLERY



**DID YOU INHERIT GRANDMA'S PRIZED GRAVY BOAT BUT ARE CLUELESS IF IT'S WORTH A KING'S RANSOM OR A PITTANCE? CAN THAT SMALL STOOL YOU BOUGHT IN A DUSTY BARN IN MAINE ACTUALLY BE SHAKER MADE?**

The Westport Historical Society invites you to bring these heirlooms or flea market finds to the Dedee Shattuck Gallery on July 31 at 5 p.m. where Skinner Inc. Americana expert Stephen Fletcher will attempt to solve the mystery behind these treasures!

Tickets for this event are \$25 for WHS members and \$35 for non-members. The cost of a verbal appraisal is \$10 per item (limit 2). Small bites will be served and a cash bar will be available during the two-hour event.

Seats are limited for this event—a must-see for all antique aficionados. Purchase tickets on line at our website [www.wpthistory.org](http://www.wpthistory.org), or mail a check to P.O. Box N188, Westport MA, 02790. Please indicate the names of the

attendees. And, if you plan to have Mr. Fletcher appraise an object, tell us how many items you will bring. (No coins, stamps or jewelry please).

Stephen Fletcher, a resident of the Head of Westport and member of the Westport Historical Society, is a frequent guest on WGBH's "Antiques Roadshow." He is widely regarded as one of the world's foremost experts on early American furniture, American decorative arts and folk art. Please note that Mr. Fletcher will offer up informal, verbal appraisals.

The Dedee Shattuck Gallery is located at 1 Partners' Way behind Partners Village Store (865 Main Road) in Westport Central Village.

Photographs by Ken Simon



Also in July

Paul Cuffe: Yeoman in the Atlantic World, Thursday July 17, 7pm at Westport Grange, 931 Main Road

The Handy House **OPEN!** second and fourth Saturdays beginning in July

FOR INFORMATION PLEASE VISIT OUR WEBSITE [www.wpthistory.org](http://www.wpthistory.org) OR CALL 508-636-6011